

Y27 series connector



The Y27 series of environment-resisting, push/pull-lock, round connector, it is simple to connection and separation, applicable to connection under invisible or other special circumstances; they have the anti-vibration, smog-proof and EMI-proof capabilities, and are divided into dust-proof, rain-proof and air-tight varieties.

This series, compliant with Chinese military standard of GJB2905, is widely applicable to aerospace, aviation, ships, telecommunications and other fields

How to order

	Y27	A	II	20	-24	Z	J	B	M	II	B
Basic series											
Type											
Q, A, B, C, F, G, H											
Omit = Q											
H = Springtac contact											
Orientation											
I, II, III, IV, V, VI											
Omit = I											
Shell size											
08, 10, 12, 14, 16, 18, 20, 22, 24, 28, 30											
Number of contact											
01 ~ 61											
Type of connector											
T = Plug											
Z = Receptacle											
Type of contact											
J = Pin											
K = Socket											
Type of back											
L = Cable connecting receptacle											
B/B1 = Square flange receptacle											
B2 = Jam nut receptacle											
B4 = Thru bulkhead receptacle											
Type of hermetic											
M = Hermetic by rubber											
P or omit = Unsealed											
Type of back shell											
Omit = Without back shell											
II, III, IV, IX											
Material of shell											
Omit = Aluminium-alloy											
B = Stainless steel											
C = Cooper-alloy											

Performance specification

Operating temperature range: -55 °C ~ +125 °C

Shock: Max acceleration 196 m/s²

Relative humidity: 92 ~ 98% at 40 ± °C

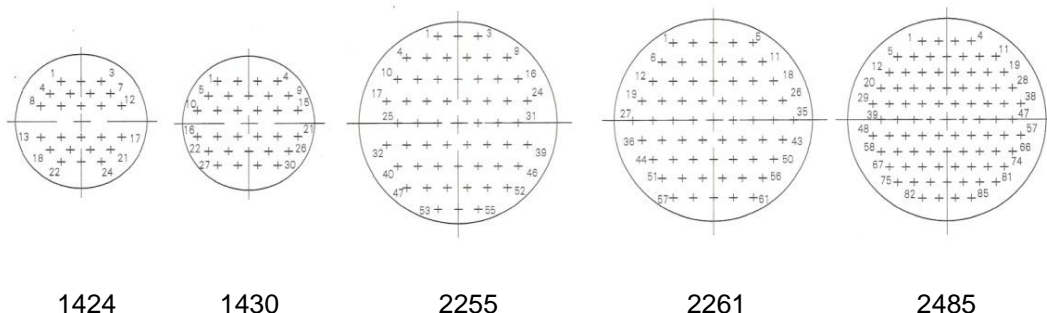
Endurance: ≥ 1000 cycles

Contact resistance and current rating:

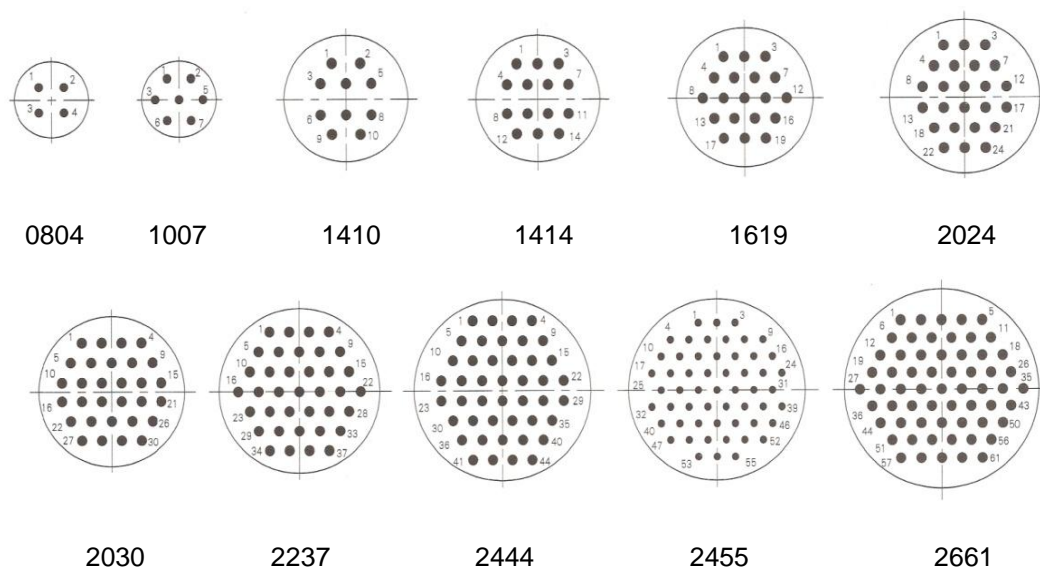
Diameter (mm)	Φ 0.8	Φ 1.0	Φ 1.5	Φ 2.5	Φ 3.5	Φ 5.0	Φ 7.0	Φ 9.0	Φ 10.0	Φ 12.0	
Current (A)	Y27B	—	5.0	10.0	25.0	50.0	75.0	100.0	150.0	200.0	—
	Y27C	—	5.0	10.0	25.0	50.0	75.0	100.0	150.0	200.0	—
	Y27F	—	7.5	—	—	—	—	—	—	—	—
	Y27G	—	7.5	13.0	25.0	50.0	75.0	100.0	150.0	200.0	250.0
	Y27H	3.0	5.0	—	—	—	—	—	—	—	—

Contact layout

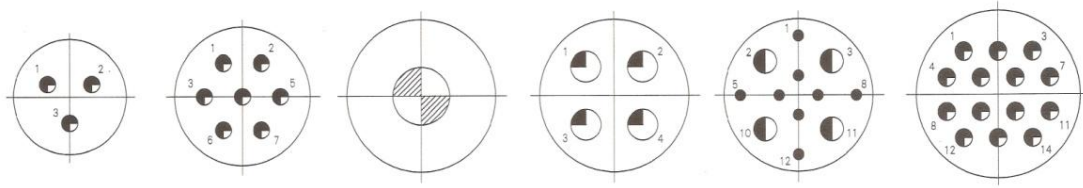
Y27



Y27A



Y27B



1203

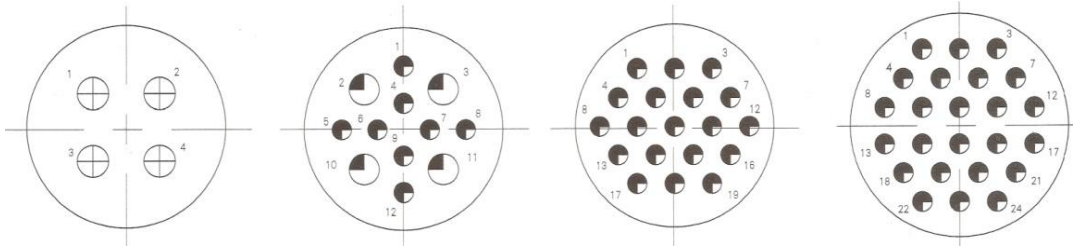
1607

2001

2004

2012

2214



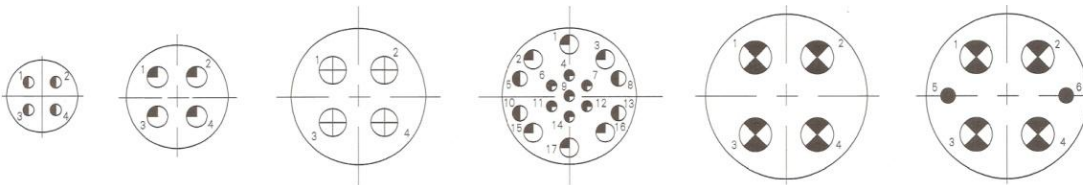
2404

2412

2419

2624

Y27C



1604

2004

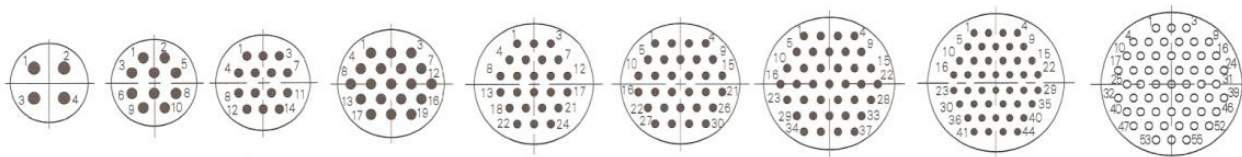
2604

2617

3004

3006

Y27F



1004

1610

1814

2019

2224

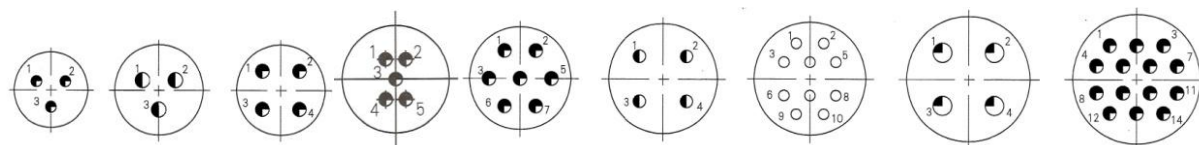
2430

2637

2844

2855

Y27G



1003

1203

1204

1405

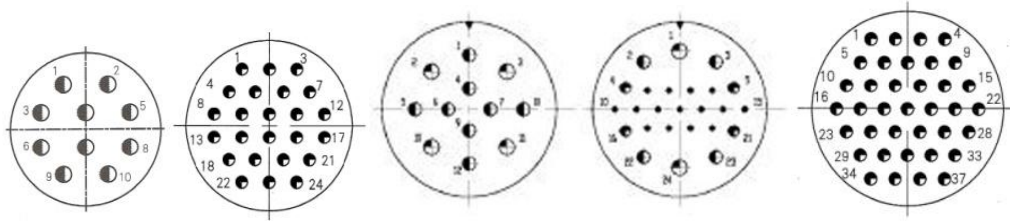
1407

1604

1810

2004

2014



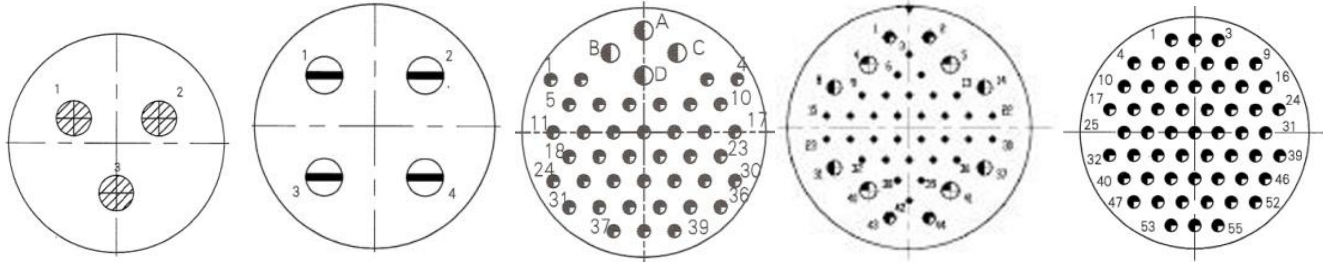
2210

2424

2612

2624

2837



3203

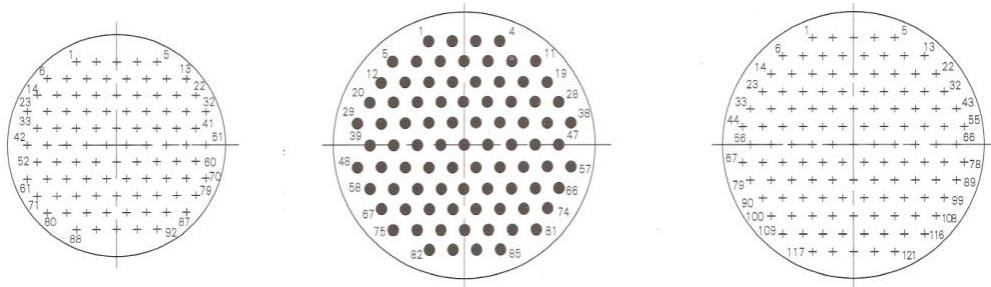
3204

3243

3244

3255

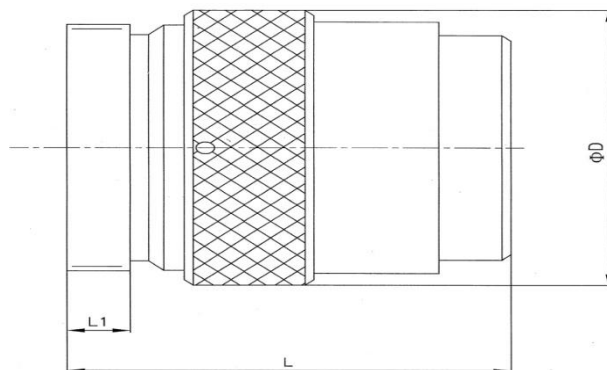
Y27H



+ Φ 0.8 \bullet Φ 1.0 \bullet Φ 1.5 \bullet Φ 2.5 \bullet Φ 3.5 \oplus Φ 5.0 \otimes Φ 7.0 \ominus Φ 9.0 \otimes Φ 10.0

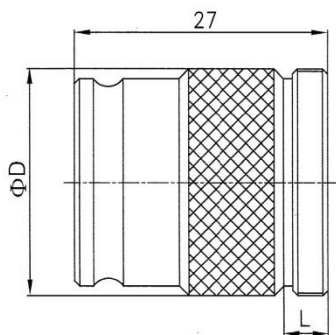
Shell size

Plug for push-pull type



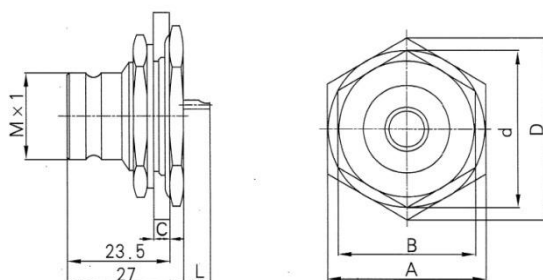
Shell No.	D	Y27/Y27A/Y27B/Y27C		Y27F/Y27G		Y27H	
		L	L1	L	L1	L	L1
08	19.5	31	5	32	6	----	----
10	21.5	31	5	32	6	----	----
12	23.5	31	5	32	6	----	----
14	26.0	31	5	32	6	----	----
16	28.0	31	5	32	6	----	----
18	30.0	31	5	32	6	----	----
20	33.5	31	5	32	6	----	----
22	36.5	31	5	32	6	----	----
24	39.5	32	6	34	7	----	----
26	43.0	32	6	34	7	34	7
28	46.0	32	6	34	7	34	7
30	50.0	37	6	38	7	----	----
32	53.0	37	----	38	7	----	----

Cable connecting receptacle



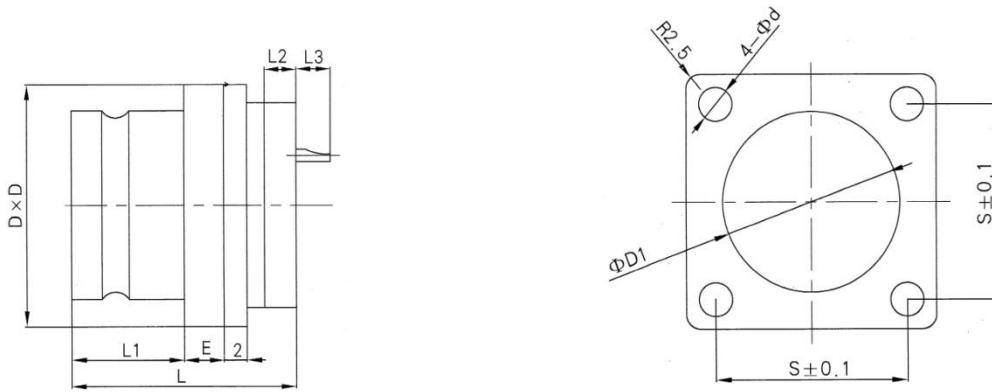
Shell No.	08	10	12	14	16	18	20	22	24	26	28	30
Φ D	14	16	18	20	22	24	27	30	33	36	39	42
L	5	5	5	5	5	5	5	5	6	6	6	6

Jam nut receptacle



Type No.	Shell No.	D	d	A	B	M	C (min)	C (max)	L (max)
Y27A	26	55.5	48.5	48	42	36	2	4.5	0
Y27B	26	55.5	48.5	48	42	36	2	4.5	2
Y27C	26	55.5	48.5	48	42	36	2	4.5	5

Square flange receptacle



Y27A, square flange receptacle

Shell No.	D	S	Φ D1	Φ d	E	L	L1	L2	L3 (max)
08	21	15	14.5	3.6	1.5	27	16	5	0
10	22	16	16.5	3.6	1.5	27	16	5	0
12	24	18	18.5	3.6	1.5	27	16	5	1
14	26	20	20.5	3.6	1.5	27	16	5	1
16	27	21	22.5	3.6	1.5	27	16	5	1
18	30	23	24.5	3.6	1.5	27	16	5	2
20	32	25	27.5	3.6	1.5	27	16	5	3
22	35	27	30.5	3.6	1.5	27	16	5	3
24	37	29	33.5	3.6	2.2	27	16	6	0
26	40	31	36.5	3.6	2.2	27	16	6	0

Y27B, square flange receptacle

Shell No.	D	S	Φ D1	Φ d	E	L	L1	L2	L3 (max)
12	24	18	18.5	3.6	1.5	27	16	5	2
16	27	21	22.5	3.6	1.5	27	16	5	2
20	32	26	27.5	3.6	1.5	27	16	5	7
22	35	27	30.5	3.6	1.5	27	16	5	2
24	42	33	33.5	5.5	2.2	27	16	6	5
26	42	32	36.5	3.6	2.2	27	16	6	2

Y27C, square flange receptacle

Shell No.	D	S	Φ D1	Φ d	E	L	L1	L2	L3 (max)
16	27	21	22.5	3.6	1.5	27	16	6.0	2
20	32	25	27.5	3.6	1.5	27	16	6.0	2
26	43	34	36.5	5.5	2.2	27	16	6.0	5
30	50	40	42.5	5.5	2.2	27	16	4.5	7

Y27F and Y27G, square flange receptacle

Shell No.	D	S	Φ D1	Φ d	E	L	L1	L2	L3 (max)(F)	L3 (max)(G)
08	21	15	14.5	3.6	1.5	29	17.5	5.5	1.2	1.2
10	22	16	16.5	3.6	1.5	29	17.5	5.5	1.2	1.2
12	24	18	18.5	3.6	1.5	29	17.5	5.5	1.2	1.2
14	26	20	20.5	3.6	1.5	29	17.5	5.5	1.2	1.2
16	27	21	22.5	3.6	1.5	29	17.5	5.5	1.2	1.2
18	30	23	24.5	3.6	2.0	29	17.5	5.5	1.2	1.2
20	33	26	27.5	3.6	2.0	29	17.5	5.5	1.2	1.2
22	36	28	30.5	3.6	2.0	29	17.5	5.5	1.2	1.2
24	39	31	33.5	3.6	2.5	29	17.5	5.5	1.2	1.2
26	42	33	36.5	3.6	2.5	29	17.5	5.5	1.2	1.2
28	45	36	39.5	3.6	2.5	29	17.5	5.5	1.2	1.2
32	52	42	45.5	5.5	2.5	29	17.5	5.5	1.2	6.0

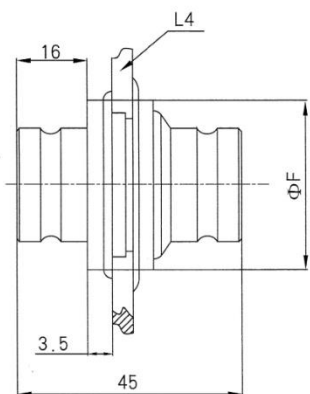
Y27 and Y27A, square flange receptacle

Shell No.	D	S	Φ D1	Φ d	E	L	L1	L2	L3 (max)
10	24	18	16.5	3.6	1.5	27	16	5	0
14	27	21	20.5	3.6	1.5	27	16	5	1
16	29	23	22.5	3.6	1.5	27	16	5	1
24	41	32	33.5	3.6	2.2	27	16	6	0
26	44	35	36.5	3.6	2.2	27	16	6	0

Y27H Series, square flange receptacle

Shell No.	D	S	Φ D1	Φ d	E	L	L1	L2	L3 (max)(F)	L3 (max)(G)
26	42	33	36.5	3.6	2.5	29	17.5	5.5	1.2	1.2
28	45	36	39.5	3.6	2.5	29	17.5	5.5	1.2	1.2

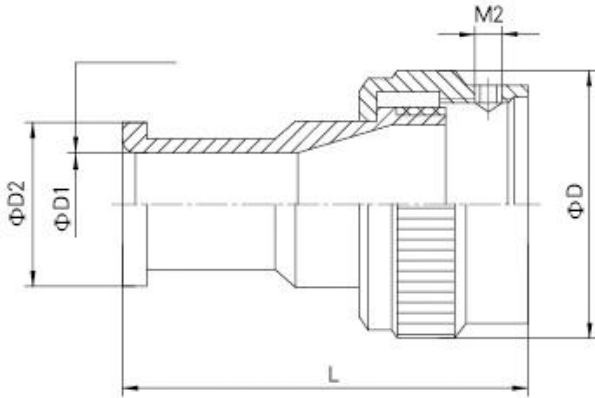
Thru bulkhead receptacle



Shell No.	08	10	12	14	16	20	22	24	26
L4 (min)	1.5	1.5	1.5	1.5	1.5	1.5	1.5	1.5	1.5
L4 (max)	5	5	5	5	5	5	5	5	5
Φ F	22	24	26	28	32	37	40	43	46
Φ E	14.5	16.5	18.5	21	22.5	27.5	30.5	33.5	36.5

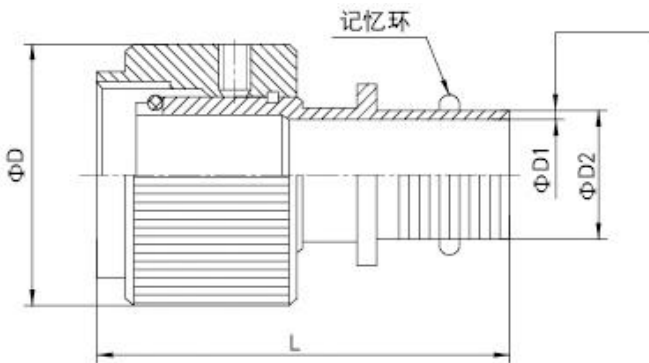
Back Shell

Back shell II



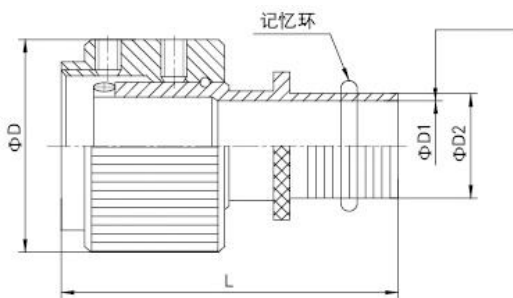
Part number	Shell No.	ΦD	$\Phi D1$	$\Phi D2$	L
Y27-08 II	08	19	5.5	9.5	36
Y27-10 II	10	21	7.5	11.5	36
Y27-12 II	12	23	9.5	13.5	36
Y27-14 II	14	25	11.5	15.5	36
Y27-16 II	16	27	13.5	17.5	37
Y27-20 II	20	33	18.5	22.5	38
Y27-22 II	22	36	21.5	25.5	39
Y27-24 II	24	39	23.5	27.5	39
Y27-26 II	26	42	26.5	30.5	42

Back shell IIA



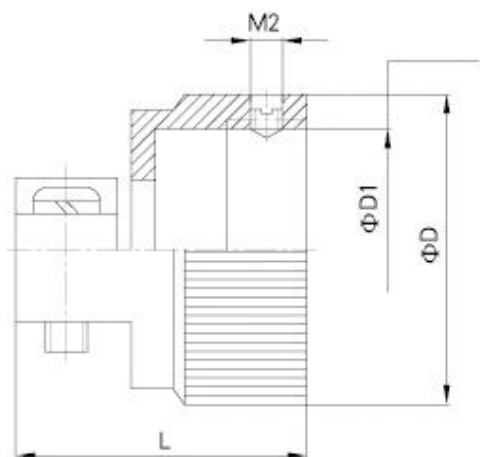
Part number	Shell No.	ΦD	$\Phi D1$	$\Phi D2$	L
Y27-08 IIA	08	20	7.5	9.5	33.5
Y27-10 IIA	10	22	9.0	11.0	33.5
Y27-12 IIA	12	24	10.7	12.7	33.5
Y27-14 IIA	14	26	12.3	14.3	33.5
Y27-16 IIA	16	28	13.9	15.9	35.5
Y27-20 IIA	20	33	20.2	22.2	37.5
Y27-22 IIA	22	36	23.4	25.4	37.5
Y27-24 IIA	24	39	26.5	28.5	38.5
Y27-26 IIA	26	42	29.8	31.8	41.5

Back shell IIB



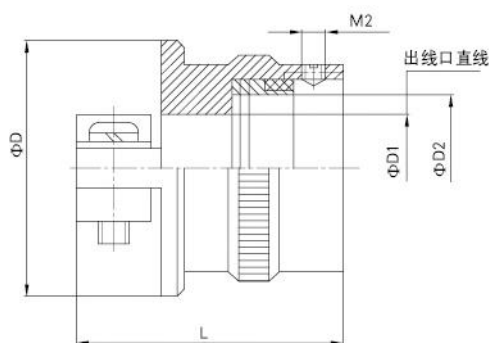
Part number	Shell No.	ΦD	$\Phi D1$	$\Phi D2$	L
Y27-10 IIB	10	22	9.0	11.0	31.6
Y27-12 IIB	12	24	10.7	12.7	31.6
Y27-14 IIB	14	26	12.3	14.3	31.6
Y27-16 IIB	16	28	13.9	15.9	33.6
Y27-18 IIB	18	30	17.0	19.0	33.6
Y27-20 IIB	20	33	20.2	22.2	35.6
Y27-22 IIB	22	36	23.4	25.4	35.6
Y27-24 IIB	24	39	26.5	28.5	36.6
Y27-26 IIB	26	42	29.8	31.8	39.6
Y27-28 IIB	28	45	33.0	35.0	39.6
Y27-32 IIB	32	51	39.3	41.3	39.6

Back shell III



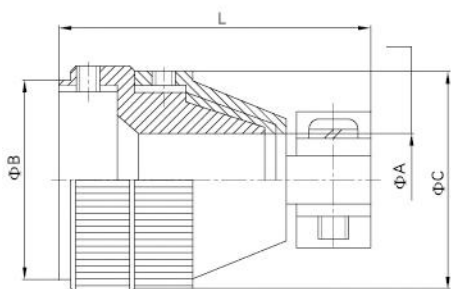
Part number	Shell No.	Φ D	Φ D1	L
Y27-08 III	08	17	6	19
Y27-10 III	10	19	8	19
Y27-12 III	12	20	8	19
Y27-14 III	14	22	10	20
Y27-16 III	16	24	12	22
Y27-18 III	18	26	12	22
Y27-20 III	20	29	16	24
Y27-22 III	22	32	18	25
Y27-24 III	24	37	24	26
Y27-26 III	26	39	26	29
Y27-28 III	28	41	26	29
Y27-30 III	30	44	30	35
Y27-32 III	32	47	36	38

Back shell IV



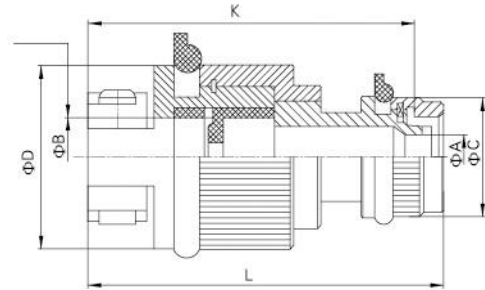
Part number	Shell No.	Φ D	Φ D1	Φ D2	Φ L
Y27-16 IV	16	35	22	15.8	32
Y27-20 IV	20	37	24	20.8	32
Y27-26 IV	26	46	28	29	40
Y27-26 IV	26	46	28	29	53
Y27-30 IV	30	54	36	35	56
Y27-30 IV	30	54	36	35	85

Back shell VIII



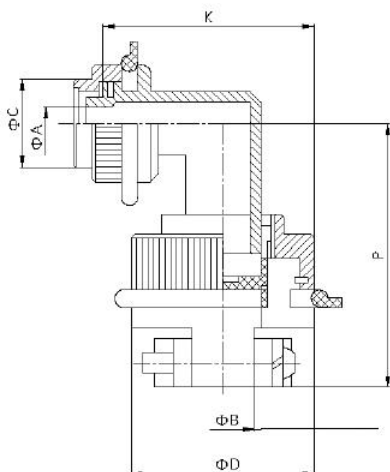
Part number	Shell No.	Φ D	Φ D1	Φ D2	L
Y27-10 VIII	10	7	22	22	36
Y27-12 VIII	12	16	24	30	38
Y27-16 VIII	16	11	28	26	40
Y27-18 VIII	18	9	30	24	40
Y27-24 VIII	24	11	39	26	42
Y27-26 VIII	26	14	42	28	42

Back shell V



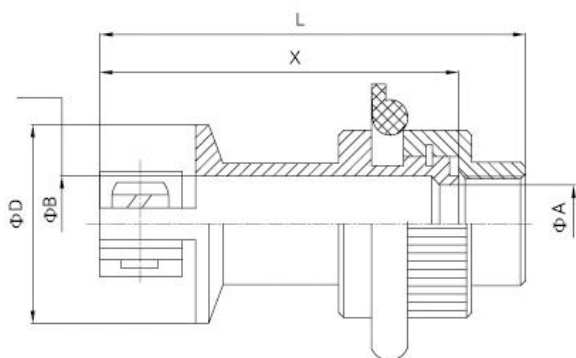
Part number	Φ A	Φ B	Φ C	Φ D	K	L	T (min)	T (max)
Y27-10 VA	9.6	11	23	27	54	59	6.0	11.0
Y27-10 VD	9.6	13	23	29	54	59	6.0	13.0
Y27-12 VA	11.6	11	25	27	46	51	6.0	11.0
Y27-12 VB	11.6	13	25	29	54	59	8.0	13.0
Y27-12 VC	11.6	15	25	31	54	59	10.0	15.0
Y27-12 VD	11.6	18	28	34	54	59	12.0	18.0
Y27-14 VA	13.6	11	26	27	47	52	6.0	11.0
Y27-14 VB	13.6	13	26	29	47	52	8.0	13.0
Y27-14 VD	13.6	15	26	31	57	62	10.0	15.0
Y27-16 V	15.6	11	28	27	47	52	6.0	11.0
Y27-16 VA	15.6	15	28	31	49	54	10.0	15.0
Y27-16 VB	15.6	18	28	34	60	65	12.0	18.0
Y27-18 VA	17.6	15	31	31	49	54	10.0	15.0
Y27-18 VB	17.6	18	31	34	60	65	10.0	18.0
Y27-18 VD	17.6	21	31	37	65	70	12.0	21.0
Y27-18 VF	17.6	24	34	40	65	70	14.0	24.0
Y27-20 VA	20.6	18	34	34	51	56	12.0	18.0
Y27-20 VB	20.6	21	34	37	68	73	14.0	21.0
Y27-20 VC	20.6	24	34	40	68	73	16.0	24.0
Y27-20 VD	20.6	27	37	43	68	73	18.0	27.0
Y27-22 VA	23.6	21	37	37	57	62	14.0	21.0
Y27-22 VB	23.6	24	37	40	71	76	16.0	24.0
Y27-22 VC	23.6	27	37	43	71	76	18.0	27.0
Y27-22 VD	23.6	33	43	51	76	81	22.0	30.0
Y27-24 VA	25.6	21	40	37	57	63	14.0	36.0
Y27-24 VB	25.6	24	40	40	57	63	16.0	24.0
Y27-24 VC	25.6	27	40	43	71	77	18.0	27.0
Y27-24 VD	25.6	30	40	48	71	77	20.0	30.0
Y27-24 VE	25.6	36	46	54	76	82	24.0	36.0
Y27-26 VA	28.6	24	42	40	59	65	16.0	24.0
Y27-26 VB	28.6	27	42	43	59	65	18.0	27.0
Y27-26 VC	28.6	30	42	48	74	80	20.0	30.0
Y27-28 VA	31.6	27	46	43	59	65	18.0	27.0
Y27-28 VB	31.6	30	46	48	59	65	20.0	30.0
Y27-28 VC	31.6	33	46	51	81	87	22.0	33.0
Y27-28 VD	31.6	39	49	57	81	87	28.0	39.0
Y27-28 VE	31.6	46	56	65	81	87	28.0	46.0
Y27-32 VA	37.6	46	58	65	81	87	28.0	46.0

Back shell VI



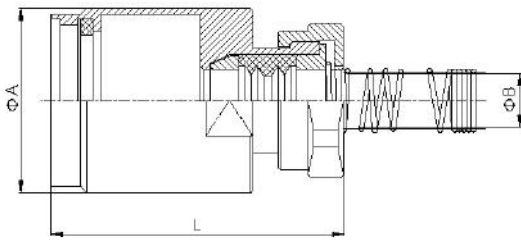
Part number	ΦA	ΦB	ΦC	ΦD	K	T (min)	T (max)	P
Y27-18 VID	17.6	21	31	37	46.5	12.0	21.0	67.5
Y27-18 VIF	17.6	24	34	40	49.5	14.0	24.0	69.0
Y27-20 VIB	20.6	21	34	37	46.5	14.0	21.0	68.5
Y27-20 VIC	20.6	24	34	40	49.5	16.0	24.0	70.0
Y27-20 VID	20.6	27	37	43	52.5	18.0	27.0	71.5
Y27-22 VIA	23.6	21	37	37	48.0	14.0	21.0	73.5
Y27-22 VIB	23.6	24	37	40	49.5	16.0	24.0	75.0
Y27-22 VIC	23.6	27	37	43	52.5	18.0	27.0	76.5
Y27-22 VID	23.6	33	43	51	59.5	22.0	33.0	84.5
Y27-24 VIA	25.6	21	40	37	49.0	14.0	21.0	73.5
Y27-24 VIB	25.6	24	40	40	50.5	16.0	24.0	75.0
Y27-24 VIC	25.6	27	40	43	52.5	18.0	27.0	76.5
Y27-24 VID	25.6	30	40	48	56.5	20.0	30.0	78.0
Y27-24 VIE	25.6	36	46	54	62.5	24.0	30.0	86.0
Y27-26 VIA	28.6	24	42	40	52.0	16.0	24.0	76.0
Y27-26 VIB	28.6	27	42	43	53.5	18.0	27.0	77.5
Y27-26 VIC	28.6	30	42	48	56.5	20.0	30.0	79.0
Y27-28 VIA	31.6	27	46	43	55.0	18.0	27.0	77.5
Y27-28 VIB	31.6	30	46	48	57.5	20.0	30.0	79.0
Y27-28 VIC	31.6	33	46	51	59.5	22.0	33.0	85.5
Y27-28 VID	31.6	39	49	57	65.5	28.0	39.0	85.5
Y27-28 VIE	31.6	46	56	65	73.0	28.0	46.0	91.5
Y27-32 VIA	37.6	46	58	65	73.0	28.0	46.0	91.5

Back shell VII



Part number	ΦA	ΦB	ΦD	X	L
Y27-10 VIIA	12	12	27	30	35
Y27-12 VIIA	12	12	27	30	35
Y27-12 VIIB	15	16	31	40	45
Y27-14 VIIA	14	14	29	35	40
Y27-16 VIIA	16	16	31	35	40
Y27-18 VIIA	19	19	34	35	40
Y27-18 VIIB	21	22	37	50	55
Y27-20 VIIA	22	22	37	45	50
Y27-20 VIIB	24	25	40	55	60
Y27-22 VIIA	25	26	40	45	50
Y27-22 VIIB	27	28	43	55	60
Y27-24 VIIA	25	25	40	45	51
Y27-24 VIIB	29	31	48	60	66
Y27-26 VIIA	28	28	43	50	56
Y27-28 VIIA	31	31	48	55	61
Y27-28 VIIB	35	40	57	65	71
Y27-32 VIIA	41	46	64	65	71

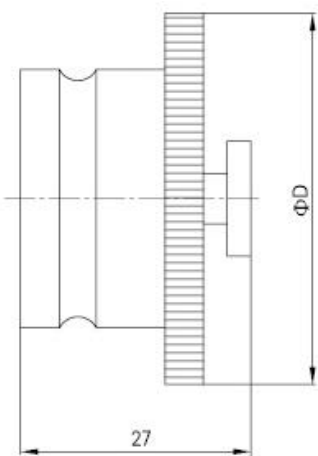
Back shell X



Part number	Shell No.	Φ A	Φ B	L
Y27-08 X	08	19	06	41
Y27-10 X	10	21	08	41
Y27-12 X	12	24	10	41
Y27-14 X	14	26	13	41
Y27-16 X	16	29	16	41
Y27-18 X	18	31	19	46
Y27-20 X	20	33	21	46
Y27-22 X	22	35	24	46
Y27-24 X	24	38	27	51
Y27-26 X	26	41	30	51
Y27-28 X	28	44	33	51
Y27-30 X	30	47	36	51
Y27-32 X	32	50	39	61

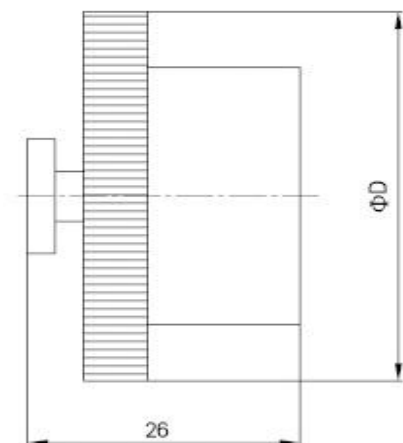
Dust cap

Dust cap of plug



For Y27, Y27A, Y27B, Y27C		For Y27F, Y27G, Y27H		D	Length of chain
Olive drab anodized	Chain with nickel plating	Olive drab anodized	Chain with nickel plating		
JS27A-08TH	JS27A-08TNL	---	---	20.0	100
JS27A-10TH	JS27A-10TNL	JS27F-10TH	JS27F-10TNL	22.0	
JS27A-12TH	JS27A-12TNL	JS27F-12TH	JS27F-12TNL	24.0	
JS27A-14TH	JS27A-14TNL	JS27F-14TH	JS27F-14TNL	26.5	
JS27A-16TH	JS27A-16TNL	JS27F-16TH	JS27F-16TNL	28.5	
JS27A-18TH	JS27A-18TNL	JS27F-18TH	JS27F-18TNL	30.5	150
JS27A-20TH	JS27A-20TNL	JS27F-20TH	JS27F-20TNL	33.5	
JS27A-22TH	JS27A-22TNL	JS27F-22TH	JS27F-22TNL	36.5	
JS27A-24TH	JS27A-24TNL	JS27F-24TH	JS27F-24TNL	39.0	
JS27A-26TH	JS27A-26TNL	JS27F-26TH	JS27F-26TNL	42.0	
---	---	JS27F-28TH	JS27F-28TNL	45.0	
JS27A-30TH	JS27A-30TNL	---	---	52.0	
---	---	JS27F-32TH	JS27F-32TNL	50.0	

Dust cap of receptacle



For Y27, Y27A, Y27B, Y27C		For Y27F, Y27G, Y27H		D	Length of chain
Olive drab anodized	Chain with nickel plating	Olive drab anodized	Chain with nickel plating		
JS27A-08ZH	JS27A-08ZNL	---	---	20.5	100
JS27A-10ZH	JS27A-10ZNL	JS27F-10ZH	JS27F-10ZNL	22.5	
JS27A-12ZH	JS27A-12ZNL	JS27F-12ZH	JS27F-12ZNL	24.5	
JS27A-14ZH	JS27A-14ZNL	JS27F-14ZH	JS27F-14ZNL	27.0	
JS27A-16ZH	JS27A-16ZNL	JS27F-16ZH	JS27F-16ZNL	29.0	
JS27A-18ZH	JS27A-18ZNL	JS27F-18ZH	JS27F-18ZNL	31.0	150
JS27A-20ZH	JS27A-20ZNL	JS27F-20ZH	JS27F-20ZNL	34.0	
JS27A-22ZH	JS27A-22ZNL	JS27F-22ZH	JS27F-22ZNL	37.0	
JS27A-24ZH	JS27A-24ZNL	JS27F-24ZH	JS27F-24ZNL	39.5	
JS27A-26ZH	JS27A-26ZNL	JS27F-26ZH	JS27F-26ZNL	42.5	
---	---	JS27F-28ZH	JS27F-28ZNL	45.5	
JS27A-30ZH	JS27A-30ZNL	---	---	48.0	
---	---	JS27F-32ZH	JS27F-32ZNL	51.0	